

**From
Sticky Notes
to
Success**

KANBAN

for

MUSICIANS

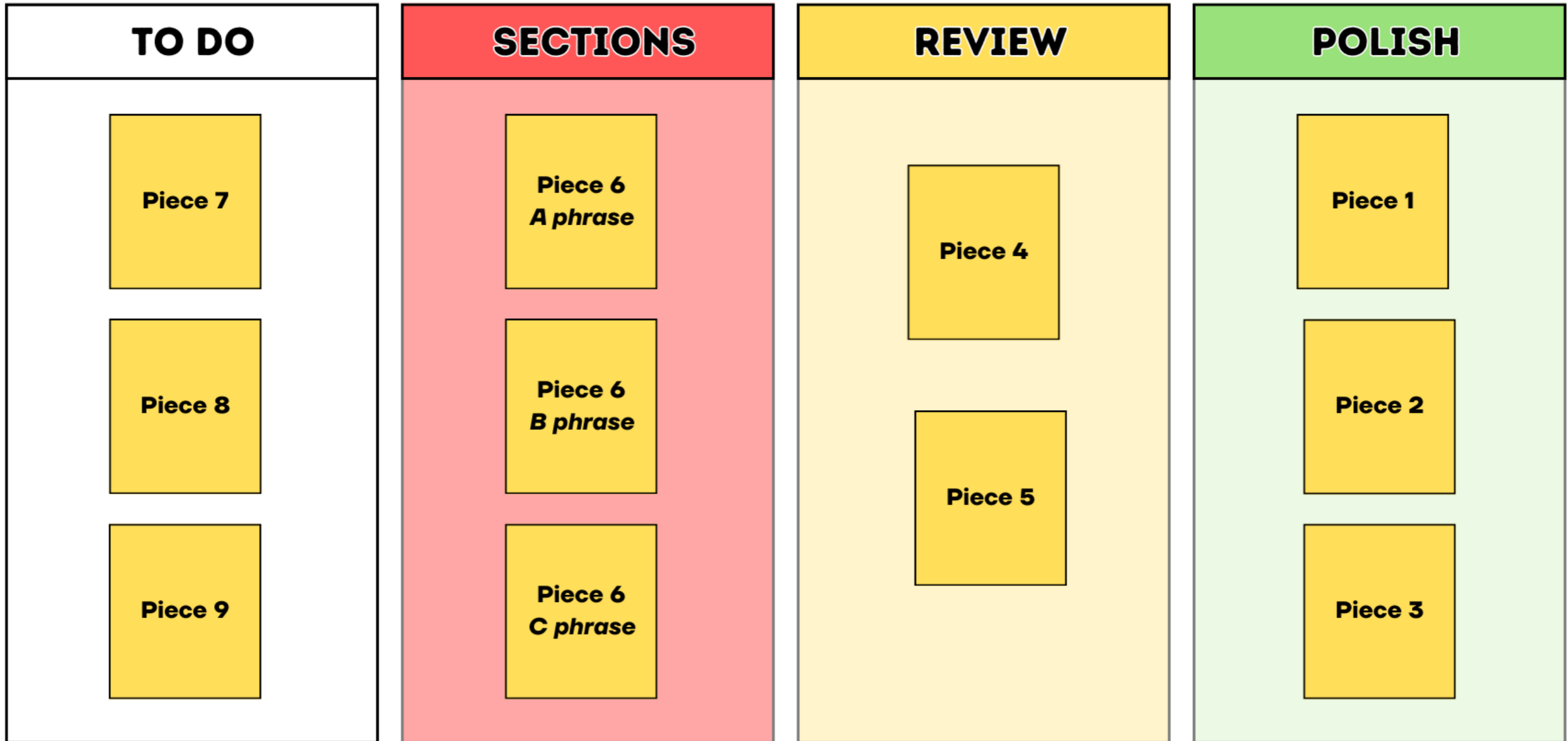
KAN = SIGN

BAN = BOARD

KANBAN = SIGN BOARD



KANBAN BOARD



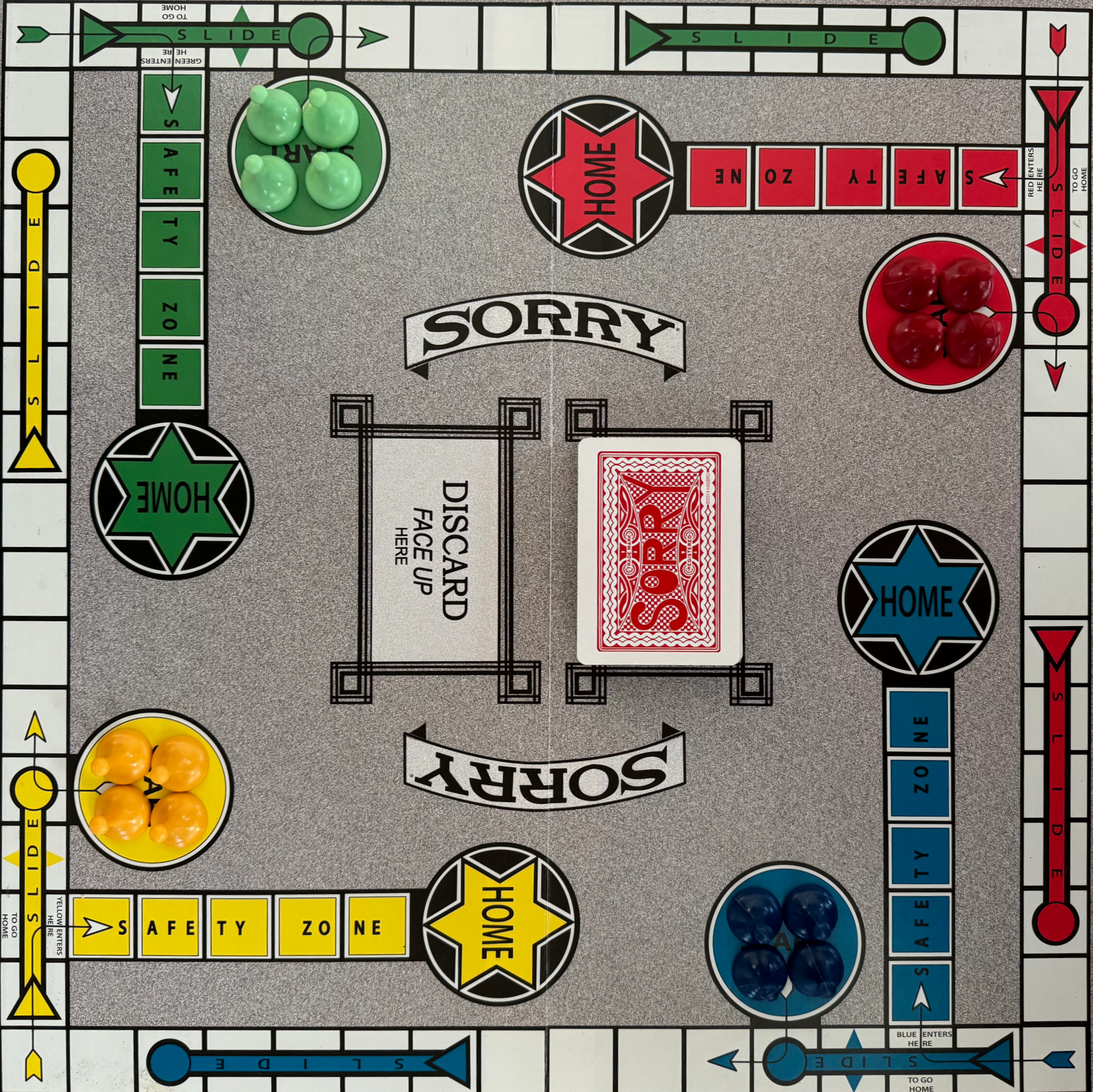
KANBAN CORNERSTONES

Visualize Workflow

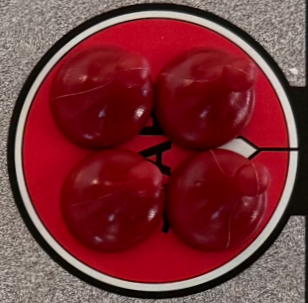
Limit Work in Progress (WIP)

Manage Flow & Establish Criteria

Communicate & Customize



SAFETY ZONE



SORRY!



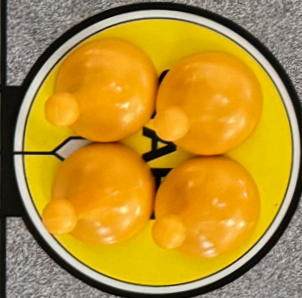
SAFETY ZONE



SORRY!



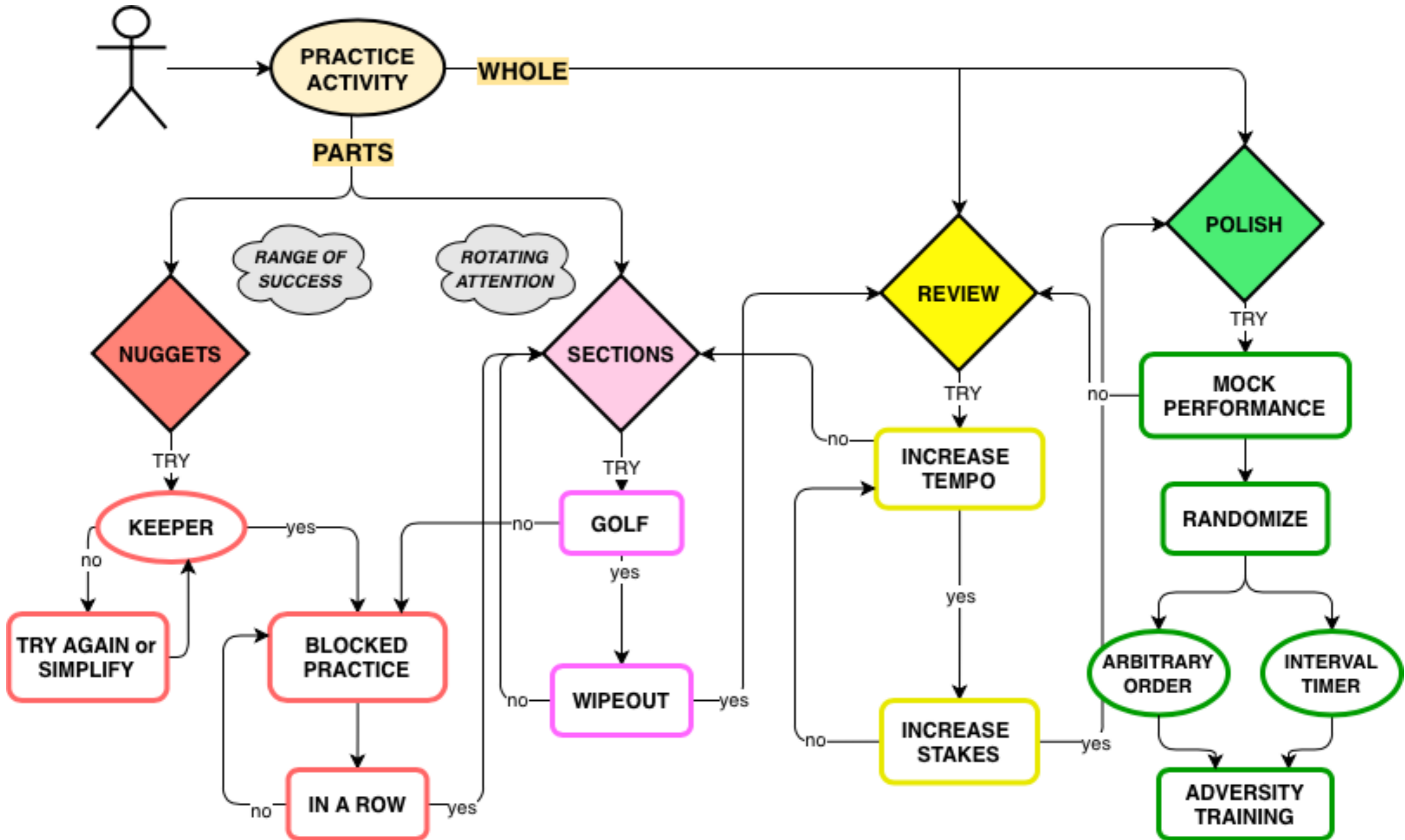
SAFETY ZONE



SAFETY ZONE



Music Practice Workflow





POSTURE

EXPRESSION

STONE

INTONATION

RHYTHM

© Linda Piatt, 2026

VIOLIN 1B

NUGGETS 4

Gavotte
Rapids

Gavotte
String x

Gavotte
Ice cubes

Minuet 3
4th finger ex

SECTIONS 4

Minuet 3
Section 1
slow

Minuet 3
Section 2
slow

Minuet 2
medium
tempo

Tonalization

REVIEW 3

Minuet 1
performance
tempo

Etude
performance
tempo

Andantino
performance
tempo

POLISH 5

Allegretto
performance
class

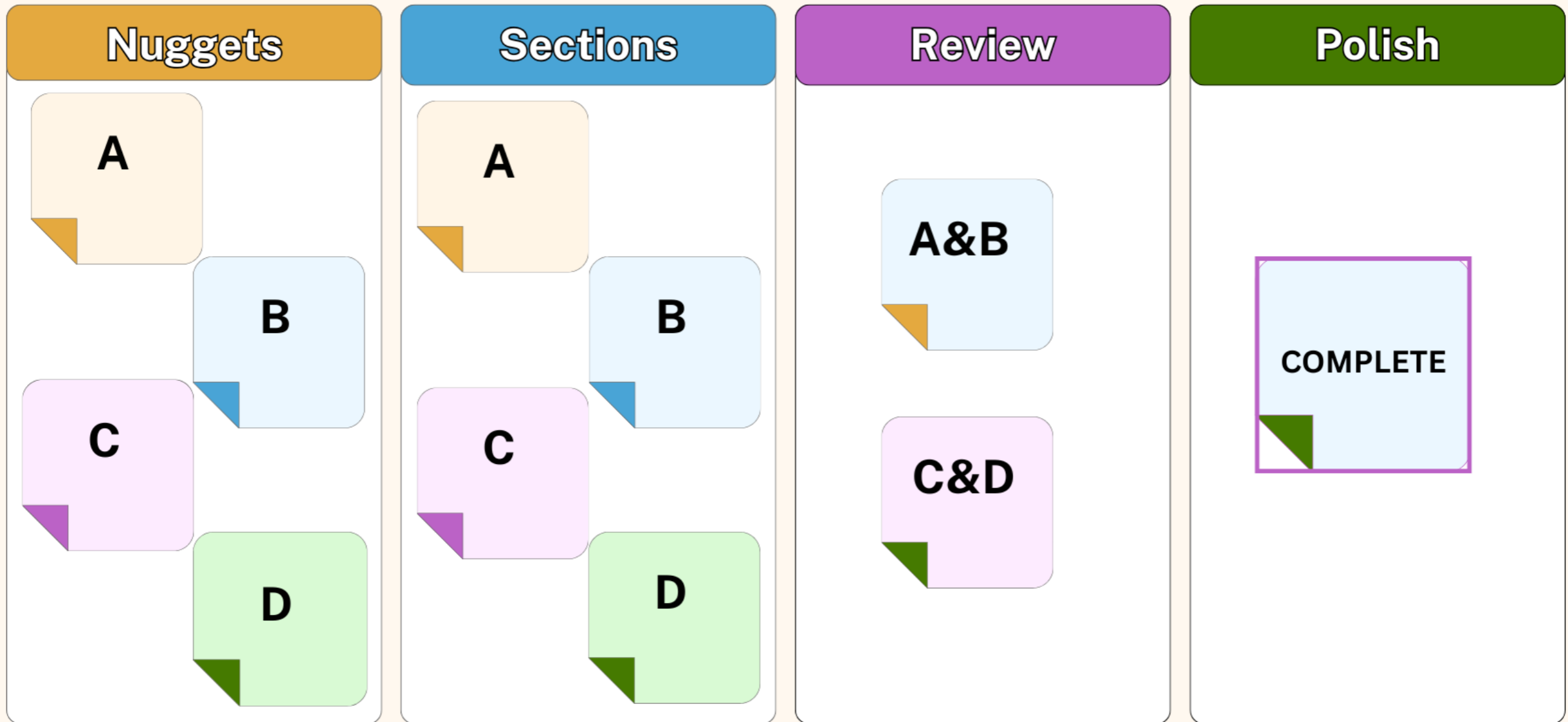
Pieces
#8-9

Pieces
#5-7

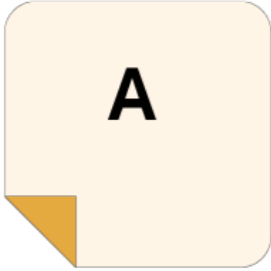
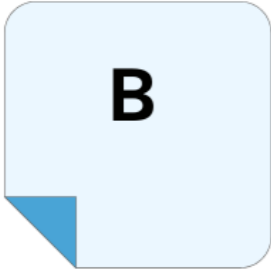
Pieces
#2-4

Twinkles

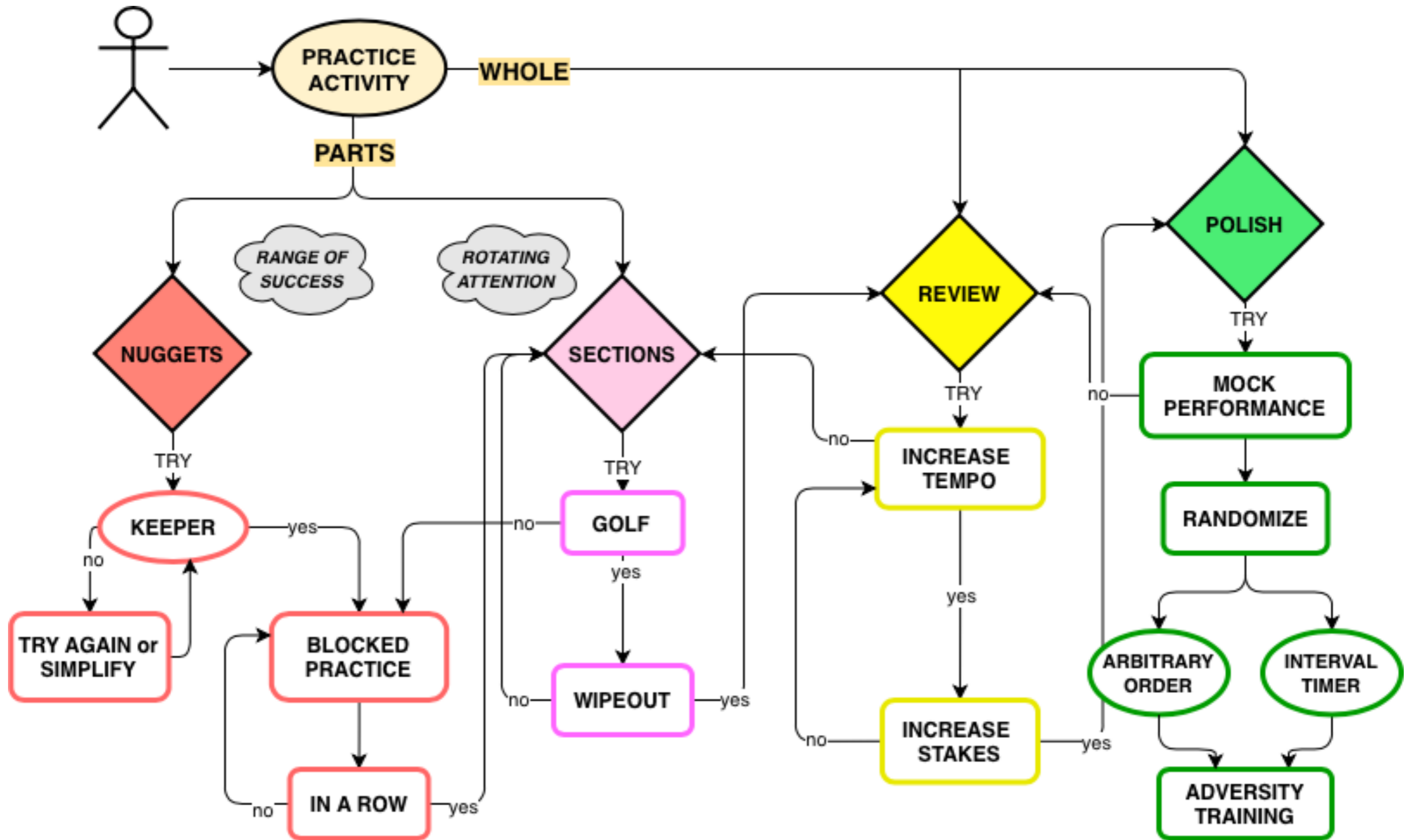
Bach Double



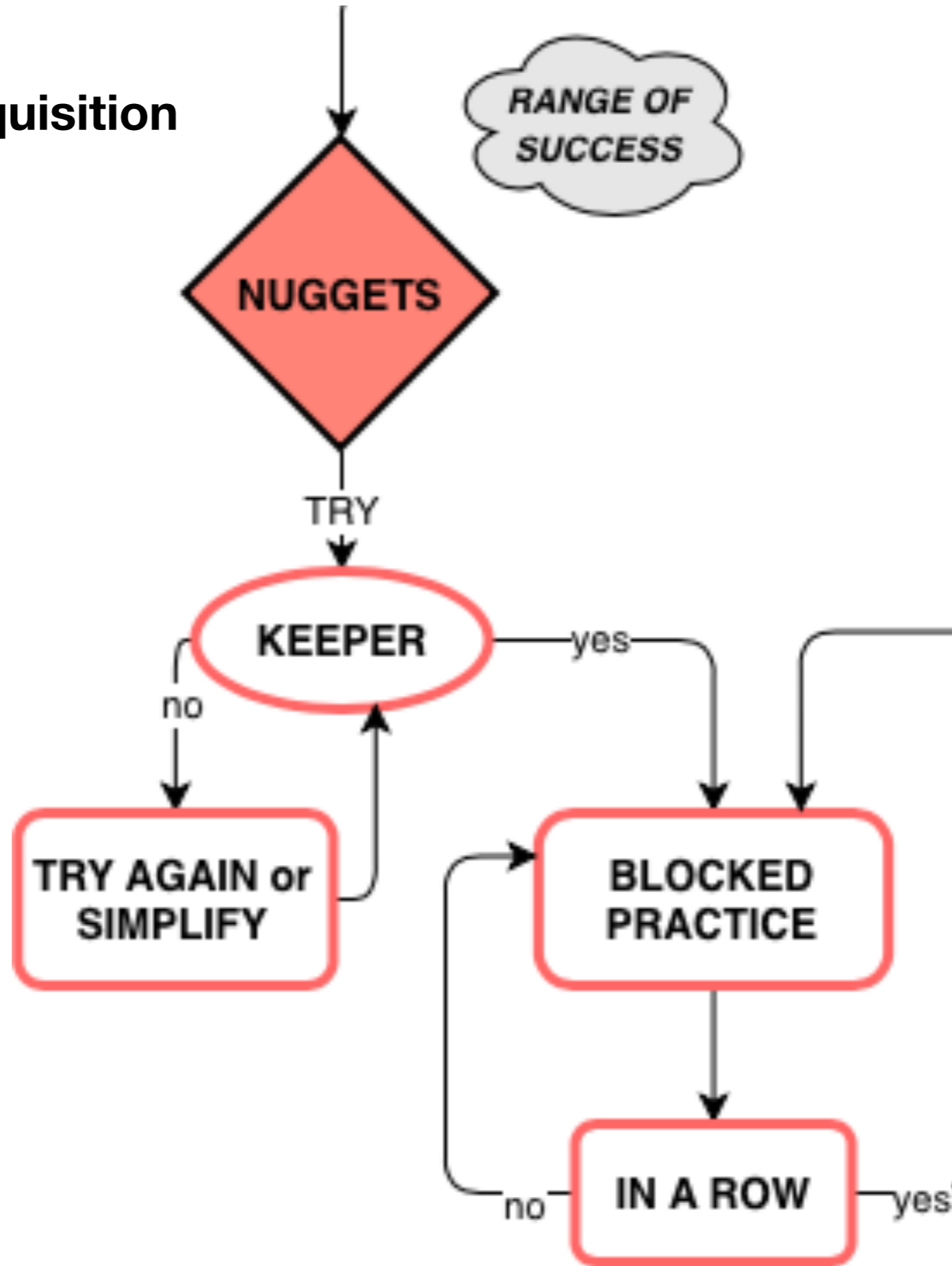
Bach Double

Nuggets	Sections	Review	Polish
 <p>A</p>  <p>B</p>			

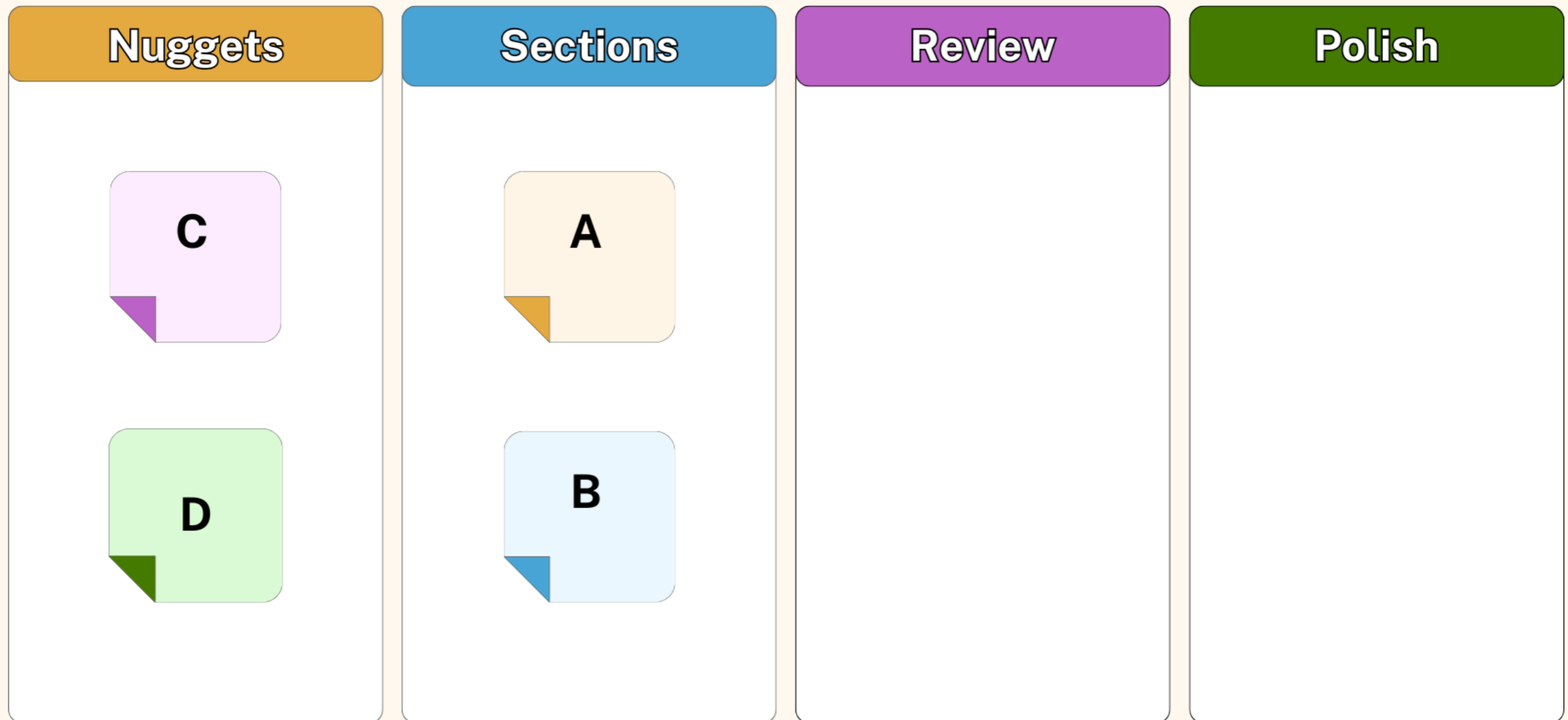
Music Practice Workflow



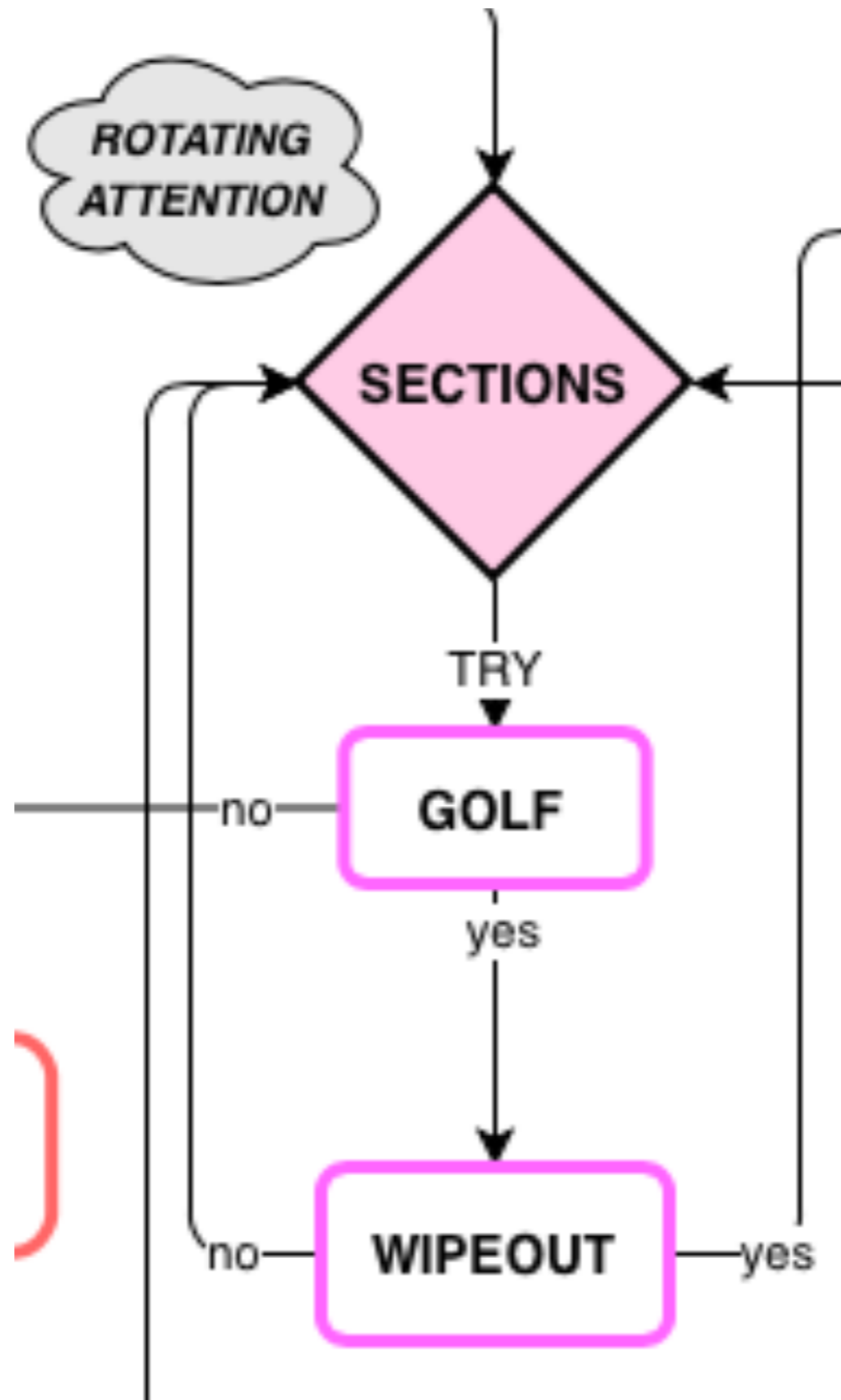
Knowledge Acquisition



Bach Double



Skill Acquisition



Bach Double

Nuggets

Sections

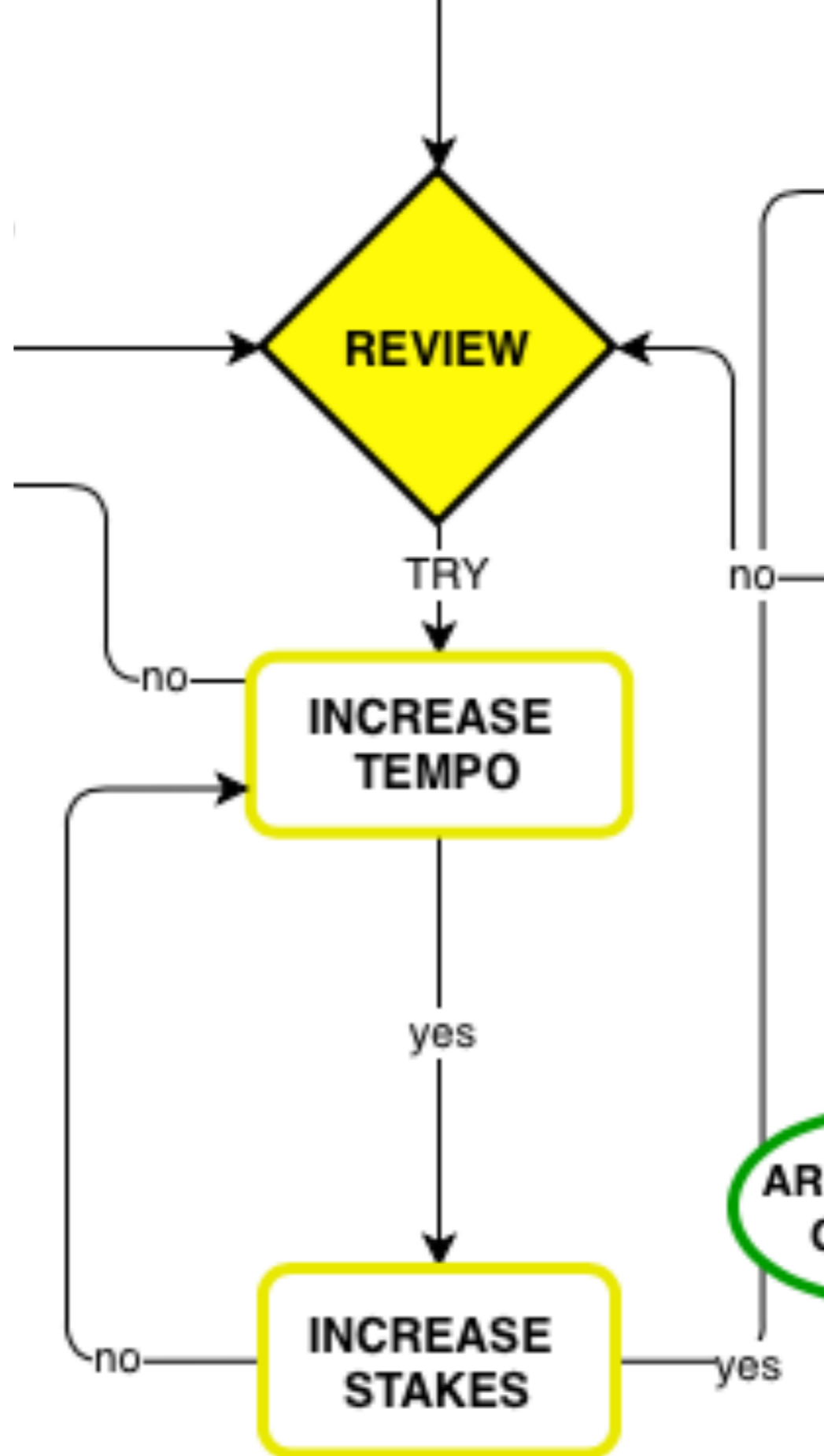
Review

Polish

A&B

C&D

Effortful Retrieval



Bach Double

Nuggets

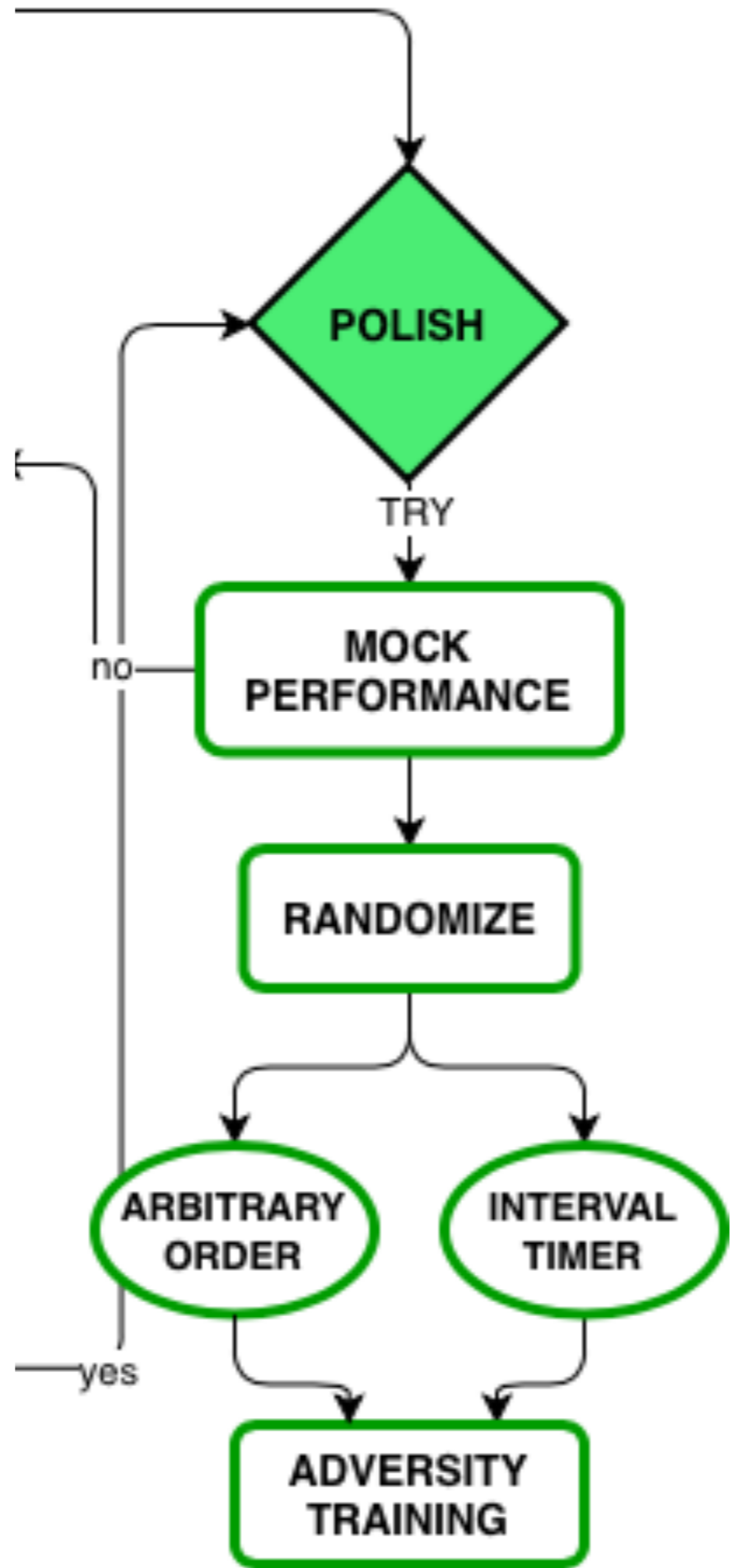
Sections

Review

Polish

COMPLETE

Automated Retrieval



KANBAN CORNERSTONES

Visualize Workflow

Limit Work in Progress (WIP)

Manage Flow & Establish Criteria

Communicate & Customize

CONTENTS:

Game Pod, START Base, 4 HOME Bases,
16 SORRY Pawns, 3 Dice

OBJECT:

Be the first player to get all 4 of your color
SORRY pawns HOME.

GAME SETUP

1. Place the START base in the center of
the play area. Place the pawns of each
color on their matching-color wedge. *All 16
pawns are in play no matter how many players
are in the game.*



WEDGE

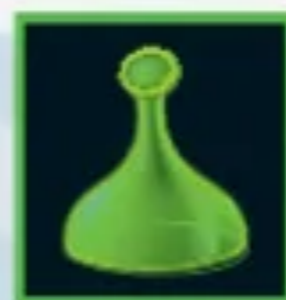
Green Player's HOME base set up
with green wedge showing.

GAMEPLAY

Decide who will go first. Play then moves
to the left.

On Your Turn

On each turn, roll all three dice, then follow
the steps below in order.



1. Color Pawns: For each
solid-color pawn you roll, take
one pawn of that color from
the START base. If there aren't
any pawns of that color there, take one
from any player's waiting area (if there are
any). *You cannot take a pawn from any player's
HOME wedge.*

Place the pawn on your HOME base. If it
matches the color of your wedge, place it
there; if not, place it on your waiting area



VIOLIN 1B

NUGGETS 4	SECTIONS 4	REVIEW 3	POLISH 5
<p>Gavotte Rapids</p> <p>Gavotte String x</p> <p>Gavotte Ice cubes</p> <p>Minuet 3 4th finger ex</p>	<p>Minuet 3 Section 1 slow</p> <p>Minuet 3 Section 2 slow</p> <p>Minuet 2 medium tempo</p> <p>Tonalization</p>	<p>Minuet 1 performance tempo</p> <p>Etude performance tempo</p> <p>Andantino performance tempo</p>	<p>Allegretto performance class</p> <p>Pieces #8-9</p> <p>Pieces #5-7</p> <p>Pieces #2-4</p> <p>Twinkles</p>

KANBAN CORNERSTONES

Visualize Workflow

Limit Work in Progress (WIP)

Manage Flow & Establish Criteria

Communicate & Customize












VIOLIN 1B

NUGGETS 4	SECTIONS 4	REVIEW 3	POLISH 2
<p data-bbox="274 684 507 909">Gavotte Rapids</p> <p data-bbox="274 950 507 1175">Gavotte String x</p> <p data-bbox="274 1216 507 1441">Gavotte Ice cubes</p> <p data-bbox="260 1481 521 1747">Minuet 3 4th finger ex</p>	<p data-bbox="905 664 1166 919">Minuet 3 Section 1 slow</p> <p data-bbox="891 950 1166 1216">Minuet 3 Section 2 slow</p> <p data-bbox="905 1246 1152 1481">Minuet 2 medium tempo</p> <p data-bbox="891 1502 1166 1727">Tonalization</p>	<p data-bbox="1564 725 1838 991">Minuet 1 performance tempo</p> <p data-bbox="1550 1062 1852 1338">Etude performance tempo</p> <p data-bbox="1522 1430 1879 1665">Andantino performance tempo</p>	<p data-bbox="2195 991 2524 1216">Allegretto performance class</p> <p data-bbox="2140 1257 2579 1696">Twinkles: 1st half / 2nd half + Pieces #2-9: Even / Odd</p>

VIOLIN 1B

NUGGETS 3	SECTIONS 3	REVIEW 3	POLISH 3
<p data-bbox="279 758 524 1003">Gavotte Rapids</p> <p data-bbox="274 1064 518 1310">Gavotte String x</p> <p data-bbox="282 1398 521 1643">Gavotte Slurs</p>	<p data-bbox="908 723 1152 968">Gavotte Section 1</p> <p data-bbox="897 1050 1163 1316">Minuet 3 Section 1 slow</p> <p data-bbox="889 1383 1166 1649">Minuet 3 Section 2 slow</p>	<p data-bbox="1575 723 1819 968">Minuet 2 medium tempo</p> <p data-bbox="1566 1044 1843 1310">Minuet 1 performance tempo</p> <p data-bbox="1575 1432 1835 1657">Tonalization</p>	<p data-bbox="2211 682 2508 948">Etude performance tempo</p> <p data-bbox="2206 1003 2488 1214">Allegretto or Andantino</p> <p data-bbox="2132 1248 2573 1684">Twinkles: 1st half / 2nd half + Pieces #2-9: Even / Odd</p>

VIOLIN 1B

NUGGETS ²	SECTIONS ⁴	REVIEW ²	POLISH ³
 <p>Chorus Prep</p>  <p>Gavotte Rapids</p>	 <p>Gavotte Section 1</p>  <p>Gavotte Section 2</p>  <p>Gavotte Section 3</p>  <p>Gavotte Section 4</p>	 <p>Minuet 3 medium</p>  <p>Tonalization</p>	 <p>Minuet 2 medium tempo</p>  <p>Minuet 1 performance tempo</p>  <p>Twinkles: 1st half / 2nd half + Pieces #2-12: Even / Odd</p>



SORRY

SORRY

MUST TAKE ONE MAN FROM YOUR START
— PLACE IT ON ANY MARGIN SQUARE
OCCUPIED BY ANY OPPONENT AND RETURN
THAT OPPONENT'S MAN TO ITS START.
IF NO MAN IS ON YOUR START OR NO
OPPONENT'S MAN IS ON ANY MARGIN SQUARE
YOUR MOVE IS FORFEITED.

SORRY

SORRY

MUST TAKE ONE MAN FROM YOUR START
— PLACE IT ON ANY MARGIN SQUARE
OCCUPIED BY ANY OPPONENT AND RETURN
THAT OPPONENT'S MAN TO ITS START.
IF NO MAN IS ON YOUR START OR NO
OPPONENT'S MAN IS ON ANY MARGIN SQUARE
YOUR MOVE IS FORFEITED.



SORRY

ZONE



KANBAN CORNERSTONES

Visualize Workflow

Limit Work in Progress (WIP)

Manage Flow

Establish Criteria

Communicate & Customize





Marco Polo



habitica



PracticeSpace



KANBAN VARIANTS

The Merge & Highlighter Tape

Lane Lines

Anywhere, Anytime

Inclusion



BOCCHERINI

NEW	REVIEW	POLISHED
Section 1 NUGGETS		
Section 2 NUGGETS		
Section 3 DYNAMICS		
Section 4 DYNAMICS		

INI

W	REVIEW	POLISHED
	Section 1 SLOW → MED	
	Section 2 SLOW → MED	
	Section 3 SLOW → MED	
	Section 4 SLOW → MED	

II

	REVIEW	POLISHED
		Complete with Track PERFORMANCE



Handwritten musical notation on a treble clef staff, measures 1-3. The key signature has three sharps (F#, C#, G#) and the time signature is 4/4. The notation includes various bowing techniques: *Tip* (measures 1-2), *Big Big* (measure 2), *tip* (measure 3), *Tip* (measure 4), *Big Big* (measures 5-6), *tip* (measure 6), and *Big* (measure 7). Fingerings are indicated with numbers 1-4. Dynamics include *mp* (measures 1-2), *mf* (measures 5-6), and *mf* (measure 7). A yellow highlight covers measures 1-3, with the number **1** written below measure 1, **2** below measure 2, and **3** below measure 3. A $\frac{1}{2}$ note symbol is written below measures 2 and 6.

Handwritten musical notation on a treble clef staff, measures 4-6. The notation includes *4+3* (measures 4-5), *tip (small)* (measure 4), *Big* (measures 5-6), *Big* (measure 6), *Tip* (measure 7), and *Big* (measure 8). Fingerings are indicated with numbers 0-4. Dynamics include *p* (measures 4-5) and *mf* (measures 6-8). A yellow highlight covers measures 4-6, with the number **4** below measure 4, **5** below measure 5, and **6** below measure 6. A $\frac{1}{2}$ note symbol is written below measures 7 and 8.

Handwritten musical notation on a treble clef staff, measures 7-12. The notation includes *Big* (measures 7-8), *Big* (measures 9-10), *tip (small)* (measures 11-12), and *Big* (measures 13-14). Fingerings are indicated with numbers 1-4. Dynamics include *mf* (measures 7-8), *p* (measures 11-12), and *mp* (measures 13-14). An orange highlight covers measures 7-12, with the letter **A** below measure 7 and **B** below measure 11.

Handwritten musical notation on a treble clef staff, measures 13-16. The notation includes *Big* (measures 13-14), *Big* (measures 15-16), and *Big* (measures 17-18). Fingerings are indicated with numbers 0-4. Dynamics include *f* (measures 17-18). An orange highlight covers measures 13-16, with the number **3** below measure 13.

Handwritten musical notation on a treble clef staff, measures 17-20. The notation includes *tip (small)* (measures 17-18), *Big* (measures 19-20), and *Big* (measures 21-22). Fingerings are indicated with numbers 0-4. Dynamics include *p* (measures 17-18) and *mf* (measures 19-20). The piece ends with *Fine*. An orange highlight covers measures 17-20, with the number **4** below measure 17, **5** below measure 18, and **6** below measure 19. A $\frac{1}{2}$ note symbol is written below measures 21 and 22.

COMING SOON

New

A B

3 4

Section 3

Section 4

Keeper?

Yes	No
5x	
↓	
In a Row	✓ move to next ...

Combine Review

Section 1

3 4

5 6

Section 2

5 6

Combine nuggets keepers

Polished

1 2



BACH DOUBLE - NUGGETS

STEP 1

STEP 2

STEP 3

STEP 4

ARPEGGIOS

slow, in tune

groupings

continuous

incorporate

**STRING
CROSSINGS**

single string

cross 1

cross 2

incorporate

**LIFT &
CARRY**

slow, groupings

medium

fast

incorporate

CHROMATICS

slow, groupings

medium

fast

incorporate



To Do

Gavotte m82-85
INTONATION

Ravel R19 INT.

Bach 3 $\sqrt[3]{\text{JJ}}$ s
on page 3

10THS

BUILD

Bruch 3 $\sqrt[3]{\text{JJ}}$ s
on page 2

Prelude m42 INT!

Prelude m119-22 clarity

Prelude opening

Bourée rhythm 1-85

Menuet 1 m5 action

Menuet 1 → Menuet 2 transition

Loure ending INT

Bruch 2 m55-56
RHYTHM

Ravel -
"pressez"
notes
8/16

Ravel ~~R15~~ R15
INTONATION

DONE
REVIEW

Bruch 2 opening
:WARM:
:TONE:

Ravel 2/3/4 rhythm
(15 notes) 8/16

Gavotte m58-59 INT

Memorize Bourée

Menuet 1 m.17
INTONATION
(finger prep)

Gavotte [B] contract/artic.

Gavotte [A] rhythm

Prelude m86-89
INTONATION

Schubert VIII #9

m103-107
Prelude m101-108
INTONATION

Bruch 2
opening
RHYTHM

Menuet I
m.11
INTONATION

draw on prep of
NRC

ch 3 questions?
due Monday

History vocab
due Wednesday

...

...

...

...

finish math project

finish
finish rough &
start final draft

NDSU slides





HOME



C O N T A C T

L I N D A

LPIATT@POBOX.COM

LINDAPIATT.COM/KANBAN



THANK YOU

I wish to extend my deepest appreciation to all those who informed and supported me for this presentation.

ESPECIALLY:

Julia Pautz

Alice Daer

Nathan Cole

THANK YOU

*I also wish to acknowledge my primary mentors
in the Suzuki community:*

Charles Krigbaum

Daina Staggs

Kerstin Wartberg